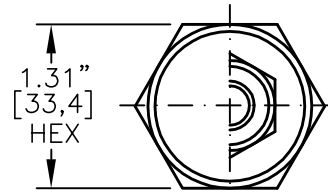
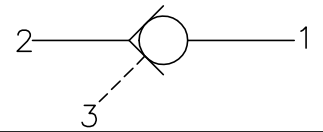
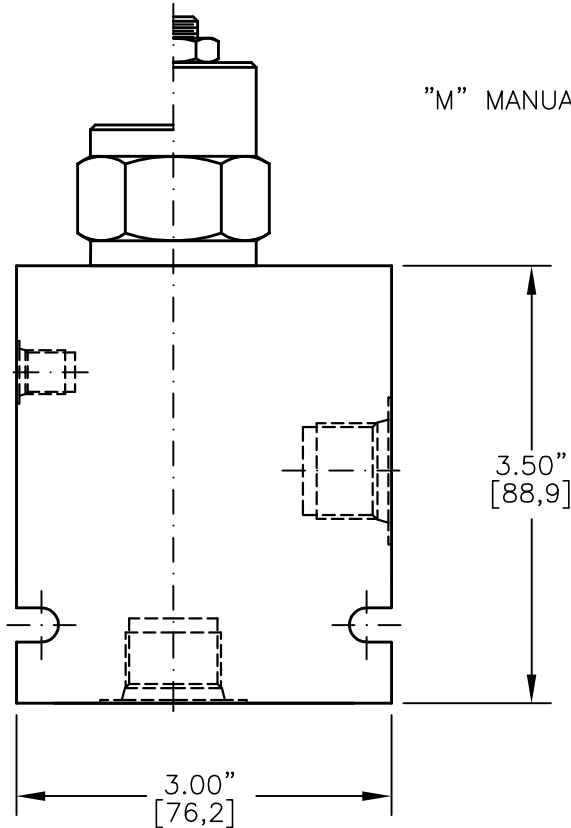




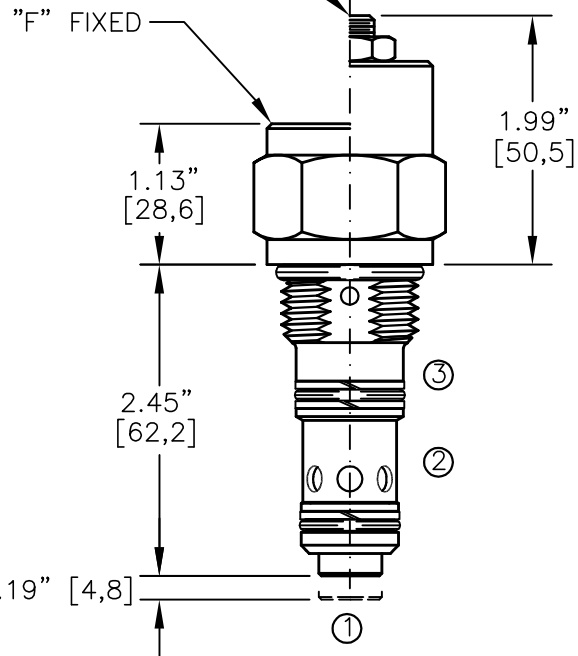
# PILOT OPERATED CHECK VALVE POPPET TYPE, PILOT TO OPEN, 3 TO 1 PILOT RATIO.



TORQUE to 70/75 Ft-Lb.  
[95/100 N-m]



"M" MANUAL LOAD RELEASE  
1/2" [12,7] HEX



NOTE: CAVITY BOTTOM HOLE MUST ALLOW FOR POPPET EXTENSION (.750 DIA.).  
FOR ALUMINUM OR STEEL VALVE HOUSING CONFIGURATIONS SEE PAGE 0-023-1.

## POCI-12-X-X-X-XXX

BASIC

SIZE

12 = 1.062"-12 UNF

SEALS

N = BUNA "N"  
V = VITON

ADJUSTMENT

F = FIXED  
M = MANUAL RELEASE

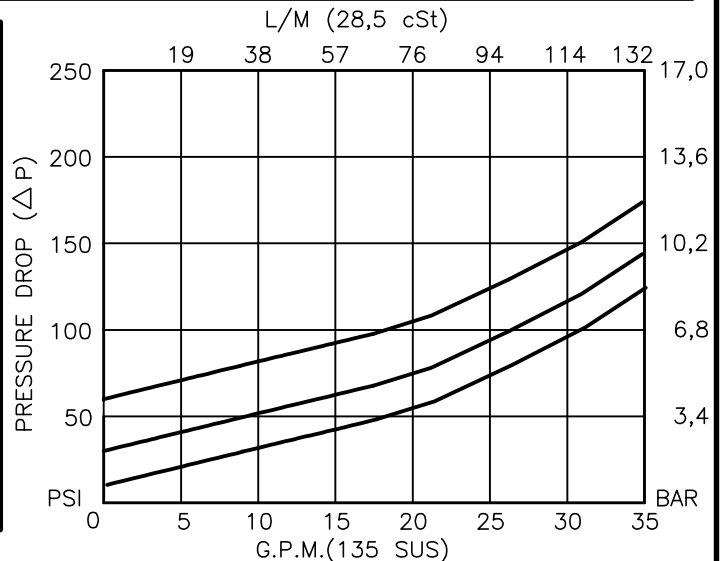
CRACK PRESSURE

010 = 10 PSI  
030 = 30 PSI  
060 = 60 PSI

PORTS

0 = CARTRIDGE ONLY  
02BX = G 1/4" BSPP  
03BX = G 3/8" BSPP  
06TX = SAE - #6  
08TX = SAE - #8

"A" - ALUM. HOUSING  
"S" - STEEL HOUSING





## PILOT OPERATED CHECK VALVE

### POPPET TYPE, PILOT TO OPEN, 3 TO 1 PILOT RATIO.

#### DESCRIPTION

This unit is a SCREW IN, cartridge type, guided poppet, hydraulic pilot operated check valve, for use as a blocking or load holding device for high pressure applications.

#### OPERATIONS

This valve allows free flow from port 2 to port 1 and blocks flow from port 1 to port 2 or holding a load. Flow will be allowed from port 1 to port 2 when sufficient pilot pressure is applied to port 3. This pilot operated check valve has a 3 to 1 pilot ratio, meaning that it takes at least one-third of the load pressure held at port 1 that is required at port 3 to open the valve.

#### FEATURES AND BENEFITS

A low friction seal on pilot piston is standard.  
A separate heavy spring assures fast return of the pilot piston for a very quick, reliable and positive valve re-seat.  
Optional screw type manual load release is available.  
All external carbon steel parts are plated for longer life against the elements.  
All cartridge valves are 100% functionally tested.

#### SPECIFICATIONS

OPERATING PRESSURE: 5,000 PSI [350 Bar]  
PROOF PRESSURE: 10,000 PSI [700 Bar]  
FLOW: 35.0 GPM [132.4 l/m] nominal. See performance chart.  
PILOT RATIO: 3 TO 1  
INTERNAL LEAKAGE: 5 drops per minute maximum @ 5,000 PSI [350 Bar]  
VALVE HOUSINGS: 2500 PSI [175 Bar] = Aluminum - Anodized.  
5000 PSI [350 Bar] = Steel - Unplated.  
OPERATING TEMPERATURE: -40° to +250° F. [-40° to +120° C.]  
OPERATING MEDIA: All general purpose hydraulic fluids such as  
MIL-H-5606, SAE-#10, SAE-#20, etc.  
INSTALLATION: No restrictions.  
SEAL KIT: SKN-1228 Buna "N"  
SKV-1228 Viton  
WEIGHT: 0.63 lb [0,25 kg] cartridge only.  
VALVE CAVITY: #C1225, See Page 0-023.0.